

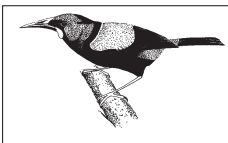
Habitat



NORTH SHORE BRANCH

AUGUST – DECEMBER 2006

SEALIONS – QUO VADIS?



FROM
THE EDITOR

Forest & Bird's national appeal this year is to reduce sealion bycatch! Everyone's urgent attention is required. Firstly, you could sign the petition against a decision by the Minister of Fisheries who has raised the annual quota of senseless killings to 150. Go to www.forestandbird.org.nz, click on the sealions picture, enter your name and email, and submit. It's that easy! Secondly, you could donate to this cause (details online). The next appeal may be relating to the protection of rivers and freshwater ecosystems.

A special welcome to those who are reading North Shore Forest and Bird's Habitat for the first time. We hope you'll come along to some branch activities or our monthly talks. But even if you're not active in our branch, you're just as important because with your subscription you become a supporter of the critical work our staff are doing around



New Zealand and, Forest and Bird is recognised in Statute.

PHOTO OF SEALIONS: TUI DE ROY

Good to have you on board!

NORTHWEST WILDLINK IN FULL SWING!

ON Saturday, May 6th, two North Shore Forest & Bird members joined up with two members from Hibiscus Coast F&B to explore the bush remnants on the boundary between North Shore City and Rodney County. This area is in the direct line between Whangaparaoa and the Waitakeres for the NW Wildlink.

The group discovered that there is a large area in regenerating bush between Albany Heights and Glenvar, running north towards Redvale. The concern is that there is only a small area in reserves, while the rest remains unprotected. As development is likely to expand northward, the bush area will be threatened

by subdivision. Already there are adverse effects noticeable from development on some steep hillsides, adding runoff soil to the sediments of the Okura River.

Both North Shore City Council and Rodney District Council are signatories of the NW Wildlink, and we need to encourage them to do more to stop the destruction of bush areas.

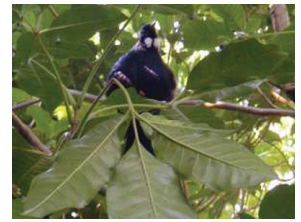
CEDRIC HAY, TREASURER.

PS: NSCC meanwhile acquired 49ha land north of Albany consisting of native bush, linking existing reserves in area.

Habitat



REEF HERON *EGRETTA SACRA* - (MATUKU)



TUI *PROTHEMADERA NOVAESEELANDIAE*

AUGUST - DECEMBER 2006

NEWSLETTER OF THE ROYAL FOREST AND BIRD PROTECTION SOCIETY *TIAKI TAIAO*, NORTH SHORE BRANCH

FROM THE CHAIR

Better outcomes for North Shore conservation

A very warm welcome to Susie Bettany and Fleur Schultz to the committee. Apart from the personal qualities Susie and Fleur bring to the committee, it is particularly good to have some more, younger committee members.

It's also good to have the entire 'old' committee back again – a tried and trusted group! With the mix of old and new, we feel we'll be able to achieve even better outcomes for North Shore conservation.

Since the last Habitat was published, your committee has hosted representatives from all the northern F&B branch committees to a day long Regional Meeting. This was a great success, and special thanks go out to all those branch members who contributed to a fantastic lunch on the day.

We have also had ongoing involvement with the Highbury stray cats issue, and submitted and met with Council *ad nauseum* in order to resolve this. We acknowledge that it is a touchy subject, but feel very comfortable with Forest and Bird's policy to support cat ownership when that is responsibly managed. Clearly, in this case, the cats are free to roam into the bush at all times and are a threat to native lizards and birds. The management of the colony is not in line with the Forest and Bird policy on cats, which was written in consultation with SPCA. Council has stated its position and now needs to take decisive action!

By the time you get this Habitat, our Tuff Crater Planting Bee will have been over (report in next issue), our planting in Little Shoal Bay will be about to happen (Sunday, 16 July), and you'll be in time to register your name to help with our two North Shore F&B support projects: Tawharanui mainland island and Motuora restoration. We see these two as important projects in Forest and Bird's Auckland Naturally chain, and now both projects are part of the NorthWest Wildlink. Both are highly suitable for family participation. If you haven't been to Tawharanui it is a pleasant drive to a beautiful spot, and for Motuora, who could turn down a trip to an island on a gorgeous Spring day? Sausage sizzles are provided at both plantings. See Activities and Trips on the inside of your wrapper for booking details.

– Neil Sutherland, Chairperson

NORTHERN REGIONAL MEETING

Forest & Bird branches of the Northern Region gathered for a meeting hosted by North Shore Branch on 29 April at Little Shoal Bay

BRANCH ISSUES IN SHORT

FRANKLIN: Power lines over Hunuas case and kahikatea protection from sand quarry on Waikato River.

SOUTH AUCKLAND: Pylons impacting on trees near waterways. Airport – wrybills on runways; expansion affecting streams in area.

WAITAKERE: Road submission for protecting natural bush. Ark in the Park: Outbreak of salmonella on Tiri prevented stitchbird (hihi) translocations to park. Bait trial to control alien wasps. Robins breeding well.

AUCKLAND CENTRAL: Promoting planting on islands and Ark in the Park through website development. Pollen Island – F&B stewardship of 20 years; ownership transferred to DOC for scientific reserve.

NORTH SHORE: Cat colony of 30-70 strays fed by 'carers'. We tried to get colony removed on environmental grounds and businesses on health grounds. Community Board powerless to remove cat colony. NSCC endeavours to remove colony on public health grounds but care group campaigns against. Destination Parks – increase in area for parks like Kaipara; what to do with open spaces? Upper Harbour Park earmarked for mountain biking (concerns about bush protection). Tuff Crater: Peter Maddison initiated survey to obtain base data. (Refer to Alan's reports in this issue & Dec-Apr 06 issue – Ed.)

KAIPARA: Mussel farm proposal rebutted in favour of environment. Branch opposed oyster farming and sand mining proposals on Kaipara harbour.

HIBISCUS COAST: Submission on long-term plan; Rodney appearing not to fully accept reserve bush responsibility (zero predator control). Would like other branches' support to stand up to district council. (Neil suggested F&B Council Action List.) DOC and Whangaparaoa community relations ongoing. Unofficial green belt on South Rodney boundary – 500 hectares unprotected. Subdivisions not always notified. NorthWest Wildlink implications. (Refer to Cedric's report in this issue – Ed.)

MID NORTH: Effective KCC wetland planting funding project (Sheepworld Ecowalk). Many active planting days – Motuora, Tawharanui (plus other group involvement). Questions about DOC's management of Motu Kaipara. (Refer to Claire's report in Aug-Dec 05 issue – Ed.)

FAR NORTH: Extensive predator control. Island restoration projects ongoing.

Further discussions were around Green Cities (vision), Ramsar status for Kaipara (report to follow), marine mammals protection, native fish task group, pest management strategy (deer, cats, pest plants) and water rights (dairy farming, deforestation).

Neil Sutherland (as chair): It is the recommendation of this meeting that we strongly support Kaipara to become a Ramsar site and we ask the General Manager and executive to look at the scope and support for funding.

The meeting was followed by a walk through Le Roy's Bush. The next Regional Meeting will be hosted by Northern Branch in October.



NORTH ISLAND ROBIN - TIRITIRI MATANGI



CHATHAM ISLANDS BLACK ROBIN

Habitat

AUGUST - DECEMBER 2006

NEWSLETTER OF THE ROYAL FOREST AND BIRD PROTECTION SOCIETY *TIAKI TAIAO*, NORTH SHORE BRANCH

It's the end of an era

MANY North Shore Forest & Bird people were involved during the early days of planting on Tiritiri Matangi island. We arrived there from a long, slow trip that left from Weiti inlet to an island covered in rank grass; greeted first by Ray Walter and his son Eric and then later by Ray and Barbara. I can't remember where we planted on the island, but going there now regularly as a guide, my heart swells to think that I and many of the Branch, some of whom are no longer with us, spent hours planting out seedlings or pricking out baby plants from seed boxes and planting them into root trainers.

Ray and Barbara will have retired on 30 June 2006, although I have a strong suspicion that they will not be abandoning the island completely and will continue to play a part in the ongoing project.

North Shore Branch were part and parcel of Tiritiri Matangi from the very beginning, and I know that Ray and Barbara have talked many times about the involvement of our branch both financially and pragmatically over the years. Eric Geddes and Ralph Sylvester, both who were committee members, used to take Eric's dinghy up to Whangaparaoa and with a



BARBARA AND RAY WALTER.
PHOTO: DEPARTMENT OF CONSERVATION

little outboard make their way across the channel to dig dams, make bunks, add the ablution block onto the Bunkhouse, and generally assist Ray with whatever task was needed. From early on Barbara took a keen interest in the release of Saddlebacks (Tieke) on the island and Eric made hundreds of nesting and roosting boxes for these birds to use upon their release. The Branch has taken up the Saddleback as its logo in remembrance of this work.

For many years the Branch has had a regular weekend assigned in the late Spring for members to stay overnight on the island, and more recently alternating the arrangement with Kiwi Conservation Club members every two years. This has always been an exciting chance to see Ray and Barbara at work and to assist with whatever tasks are

required, as well as enjoying the opportunity of going kiwi scouting at night and more recently tuatara scouting.

It's hard to know what the atmosphere will be like on the island without the two people who have made Tiri the special place that it is today, and I know that you will share with me a sense of sorrow of their moving on into retirement. We wish them well for the future!

– Claire Stevens, Committee

Excerpts from the Chair's Annual Report to the AGM, May 1st

THE BRANCH operates as a team. Many activities happen without committee involvement: Habitat folding and distribution, helping at branch meetings, etc. *Thanks everyone!*

THE COMMITTEE are a wonderfully enthusiastic group. It was particularly pleasing to have some of the newer committee members attend the F&B Council Meeting in Rotorua last November.

KIWI CONSERVATION CLUB. Our junior section of Forest and Bird goes from strength to strength thanks to the team of co-ordinators and the exciting programme.



MONTHLY MEETINGS are attracting increasing numbers of non-members, reflecting the very high calibre of speakers.

We had a record of nearly 100 people attend one meeting!

AUCKLAND NATURALLY/NORTH-WEST WILDLINK. Signing of the Wildlink Accord by five local bodies along

with Forest and Bird presents a new and exciting challenge for our branch. We need to make NorthWest Wildlink a real force which benefits our environment.

CONSERVATION WORK. **Tuff Crater:** Regular monthly working bees have had a significant impact on the planting area. Weeds are now almost under control. Another very successful public planting day was held.

Le Roy's Bush: A very successful Community/F&B planting day was held.

RMA: Submissions were made to the Long Bay Structure Plan, ARC's Draft Pest Management Strategy, and several private plan hearings.

SUPPORT PROJECTS: We have taken groups to restoration activities at Tawharanui mainland island, Motuora and Centennial Park.

MEMBERSHIP. This continues to be static. We need every individual member to adopt membership recruitment as a personal commitment.

– Neil Sutherland, Chairperson

Habitat

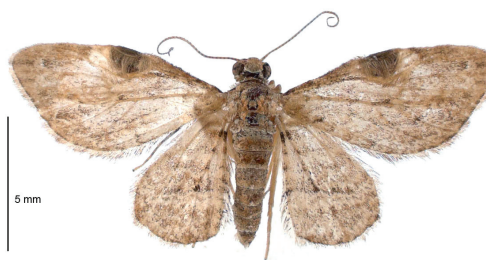
We would like to plead with Forest and Bird members to volunteer a bit of their free time to ring more or less six people every two months. For more details, please contact Muriel Fanselow on 486 4884. Thank you for your patronage!

AUGUST - DECEMBER 2006

NEWSLETTER OF THE ROYAL FOREST AND BIRD PROTECTION SOCIETY *TIAKI TAIAO*, NORTH SHORE BRANCH

Updates on Tuff Crater's biological survey: Moth & Bird!

I have been sampling the moths and butterflies (Lepidoptera) of Tuff Crater for a year now and also keeping notes on the birds spotted when walking in the area. It is hoped that this data will give us a baseline of species present that we can refer to in the future when the native plantings are better established and, hopefully, a more diverse range of species will be present. The results to date show 50 species of moth, 5 of butterflies and 29 of birds. But this is only raw data and there are a couple of stories behind the numbers...



NEW RECORD: *CHLOROCLYSTIS LUNIFERA*
(PHOTO: BIRGIT RHODE/LANDCARE)

Moth trapping is carried out from the lookout at the bottom of St Peter's Street, usually for a couple of hours from dusk. I take my trap, a generator and the usual assortment of pots, bottles, nets and other paraphernalia associated with the task. I am often accompanied by members who are curious about how it is done and I enjoy the company. A dog-walking local is the only person ever to enquire as to what we are doing. He seemed to accept my explanation and offered his own environmental credentials by pointing out that his dog had killed 'dozens' of possums around the reserve over the years! Moth collecting so far has been fairly predictable with little of particular interest. There is a preponderance of exotic species that feed on garden plants, reflecting the suburban setting, and we had a good haul of an Australian migrant, the sugarcane armyworm, *Leucania stenographa*, in March. There are also native species such as the Cabbage Tree Moth (*Epiphyryne verriculata*), the Mahoe Stripper (*Feredayia graminosa*) and the Kowhai Moth (*Uresiphita polygonalis*) which all lay eggs on common native plants in the reserve.

I said that our results had been predictable, but a recent development has really shaken that up. The identity of one small moth collected was quite puzzling, but later confirmed by the Landcare lepidopterist as a new species for New Zealand: *Chloroclystis lunifera*! Originally described from New Caledonia, this species has been recorded several times during the last couple of years by an Auckland enthusiast, unaware of its identity, in Freemans Bay and again in Houhora, Northland. No other records existed until this one from Tuff Crater, so it just goes to show that exciting discoveries are there to be made right here on the Shore!

– Alan Emmerson, Committee

TUATARAS DISAPPEARING!

GIVE your 5 cents worth! Five cent coins are being phased out – please bring yours to our next meeting. Your donation will help Forest and Bird. Contact Fleur on 027 408 2713 for further information.



TUATARA
SPHENODON
PUNCTATUS

HABITAT ON THE WEB

No, not the food web – the world-wide web!

As you may know, the latest issue of Habitat can be viewed at www.forestandbird.org.nz. Back issues can be accessed through www.manawa.org.nz. Follow the appropriate links for our branch.

We'd like to remind you again to submit your email address so that your newsletter can be distributed in portable document format. This will save printing costs and channel funds more directly into conservation. (As an incentive you get Habitat in full colour on your desktop!)

If you receive both formats (i.e. paper and electronic), please notify Nick Keenleyside to cancel your hard copy. This will lessen the delivery effort on the part of our volunteers. Although we will always endeavour to have printed copies available, we urge members with internet facilities to submit their email address to Nick (info@draughting.co.nz). This will also enable us to quickly disseminate important environmental notices to you. We shall not abuse or supply your address to third parties, and you can unsubscribe at any time.

A PLEA TO TAKE OVER HABITAT DELIVERIES!

We would like to invite members who are interested in co-ordinating the folding and delivery to step forward. Dorothy Wernham has done an admirable job in this capacity and we are grateful for her contribution. She is willing to show the new person the ropes! As we are a voluntary organisation, we depend on your commitment to take this up. You may also be responsible for maintaining the membership list of our branch. To express interest, please contact Neil on 480 2500. *We'd love to hear from you!*

Royal Forest and Bird Protection Society *Tiaki Taiao*, North Shore Branch

PO Box 33-873, Takapuna, New Zealand | www.forestandbird.org.nz

The Committee 2006

NEIL SUTHERLAND	–	Chairperson	480 2500
JOCELYN SANDERS	–	Secretary	479 2107
CEDRIC HAY	–	Treasurer	410 5977
LIZ ANSTEY	–	Committee	480 1545
SUSIE BETTANY	–	Committee	479 4015
ANNE DENNY	–	Committee	480 5570
ALAN EMMERSON	–	Committee	473 2216
JIM LEWIS	–	Committee	480 7245
VICTOR MEYER	–	Committee	478 1559
FLEUR SCHULTZ	–	Committee	027 408 2713
CLAIRE STEVENS	–	Committee	419 1233
KAREN WEALLEANS	–	Committee	410 1995
HELENE WILLIS	–	Committee	480 8851
BRIAN GANNON	–	KCC	443 2479
DOROTHY WERNHAM	–	Habitat deliveries	480 8316

NEWSLETTER EDITOR

VICTOR MEYER, email: victoranddebbie@paradise.net.nz

BIRD RESCUE

SYLVIA 478 8819

Remember if you are concerned about any conservation problems in your area, get in touch with Jim or Claire.

Habitat

NEWSLETTER OF THE NORTH SHORE BRANCH
ROYAL FOREST AND BIRD PROTECTION SOCIETY



FOREST
& BIRD



TIEKE, OR
NORTH ISLAND
SADDLEBACK,
THE NORTH
SHORE BRANCH
EMBLEM



Habitat

AUGUST – DECEMBER 2006

NEWSLETTER OF THE ROYAL FOREST AND BIRD PROTECTION SOCIETY *TIAKI TAIAO*, NORTH SHORE BRANCH

WHAT'S ON

Public meetings take place on the first Monday of every month except January.

VENUE: Takapuna Senior Citizens' Hall,
The Strand (behind Takapuna Library).

TIME: 7.45pm.

ADMISSION: \$1 to cover costs.

We'd like to see you there!

AUGUST Monday 7th

'Kaipara – a Harbour Gem' presented by Suzi Phillips. This presentation will deal with environmental issues facing the Kaipara. Suzi is an active conservationist. She was founding member of Kaipara F&B, is the regional representative for Auckland Ornithological Society and editor of Tiri Tiri Matangi Dawn Chorus magazine. Come hear about the ecology of Kaipara Harbour and various restoration projects!

SEPTEMBER Monday 4th

Tonight's talk is entitled 'NZ's Brown Teal – Not Just Another Duck!' by Grant Dumbell. The presentation will detail the unusual lifestyle of this endemic waterfowl and explain the factors threatening its survival. Dr Dumbell is director of Aranovus, a company specialising in ecological assessments, habitat protection and restoration, revegetation projects, wildlife management and recovery, and pest control. He holds a PhD in ecology from Auckland University. Come to this fascinating introduction to the natural history of New Zealand's rarest duck!

OCTOBER Monday 2nd

'The World of Wetlands' is the subject of Keith Thompson's talk in which he will give an overview of world wetland types, with particular reference to NZ wetlands and their management problems! Dr Thompson specialises in wetlands management. He recently retired from the University of Waikato, where he and over 40 researchers studied wetlands for some 25 years. He is a trustee of NZ National Wetland Trust. Keith spent several years in Africa and has also extensive research experience in Europe and Antarctica.

NOVEMBER Monday 6th

'The Moa's mess mates; New Zealand in fact ancient and modern' by Dr Robert Hoare is this evening's presentation! Robert, originally from the UK, completed a classics degree followed by one in biology. For his PhD he researched leaf-mining moths in Australia. Dr Hoare arrived in New Zealand eight years ago, functioning as lepidopterist at Landcare Research ever since. His talk will focus on what makes NZ insects so special. Come along to hear more about this exciting topic!



TIRITIRI MATANGI ISLAND SEEN FROM THE NORTH-WEST. THE LIGHTHOUSE, LOCATED AT THE OPPOSITE END OF THE ISLAND, IS NOT VISIBLE HERE.

DECEMBER Monday 4th

'Tiri Tiri Matangi Is' by Ray and Barbara Walter, living on Tiritiri Matangi since 1984, is what this evening is all about! The couple will share the personal story of their time there and talk about how the island was transformed from farmland to a habitat for endangered birds. As this event is also the Christmas meeting, please bring a festive delight to share for supper. Be sure not to miss this special occasion!

ACTIVITIES and TRIPS

All are suitable for families!

July, Sunday 16th. Planting at Little Shoal Bay, 10am. A beautiful part of our city to spend an hour or two planting! Meet at the Bowling Club car park, behind the tennis court. Bring a spade if you have one. Ring Leanne on 418 2378 if you need more information.

August, Sunday 27th. Motuora island planting trip, 8am. Come and visit this unique island in the Hauraki Gulf (between Kawau Island and Whangaparaoa). This is one of North Shore Forest and Bird's key support projects. How to get there: Ferry departs from Sandspit and returns at 4pm. Fare: Adults \$16, Children 5-12 yrs \$8, under 5 yrs free (children must be supervised). Parking for the day is \$5. Sausage sizzle and cuppa provided at lunchtime! Book with Fleur (ph 027 408 2713, email: fleur.schultz@paradise.net.nz) or Neil (ph 480 2500) before 20 Aug.

October, Sunday 1st. Tawharanui mainland island working bee, 9.30am. Come along to help with this restoration project and have a wonderful day at the same time! A range of jobs, depending upon how physical people want to be; work till 1pm, lunch together, then home. Names must be given to Susie, ph 479 4015 or email susiebettany@hotmail.com by 17 Sept.

Please remember, you are encouraged to bring along non-members to these events.

Help us to widen public awareness of our conservation work!

